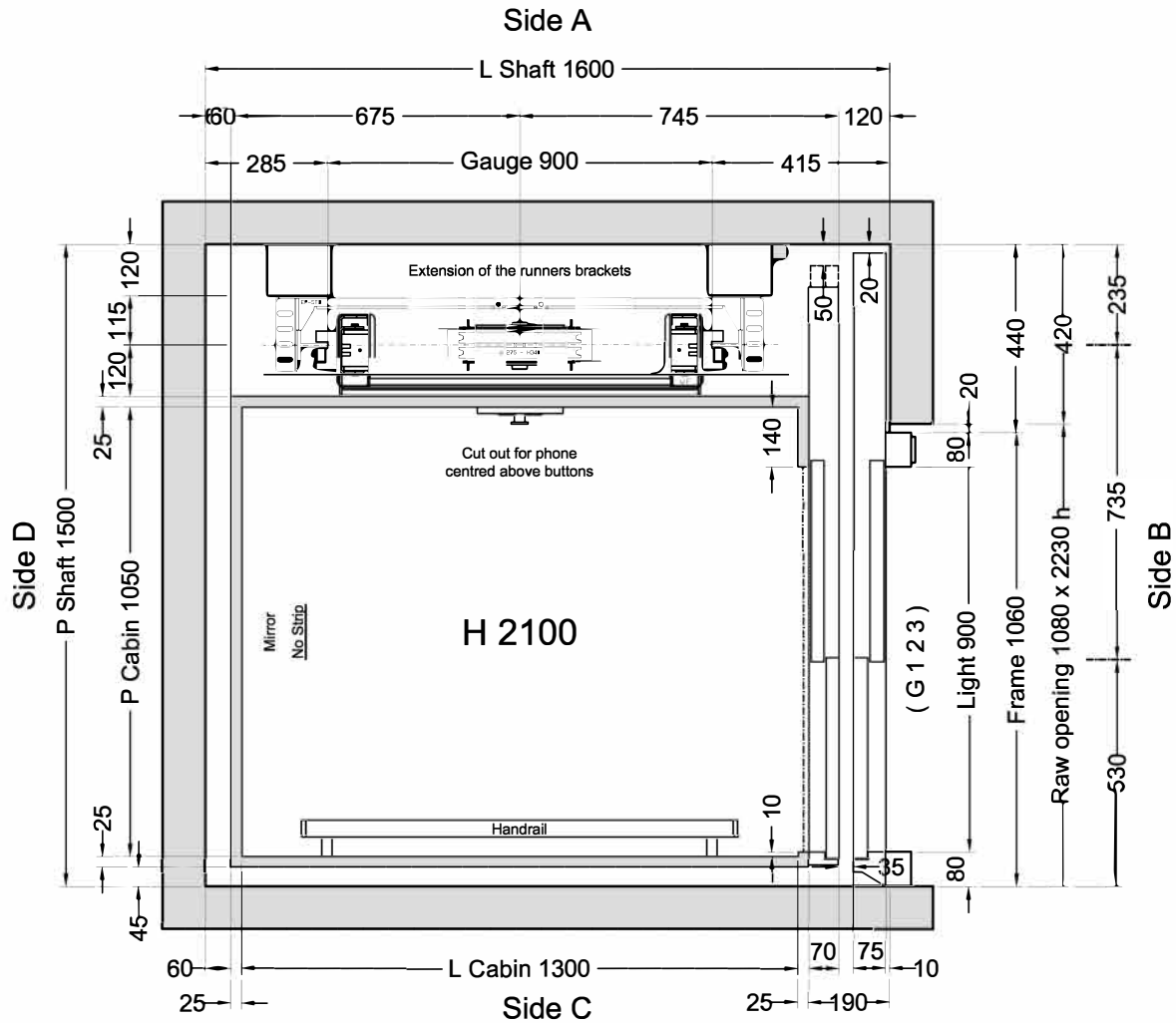


FLOOR DOOR

Side B	Side C	Side D	VERSION	H LIGHT	H FRAME	FRAME	WINDOW	GLASS	ACCESSORIES
G 1 2 3			2 Panels Inox BA mecc.	2000	2210	Inox BA mecc.	Absent		C2

C1 = Enabling key for the floor button pad (single insertion) C2 = Enabling key for the floor button pad (double insertion) PM = Button pad on the wall PE = Outside lock and button pad

□ Column for E Cables



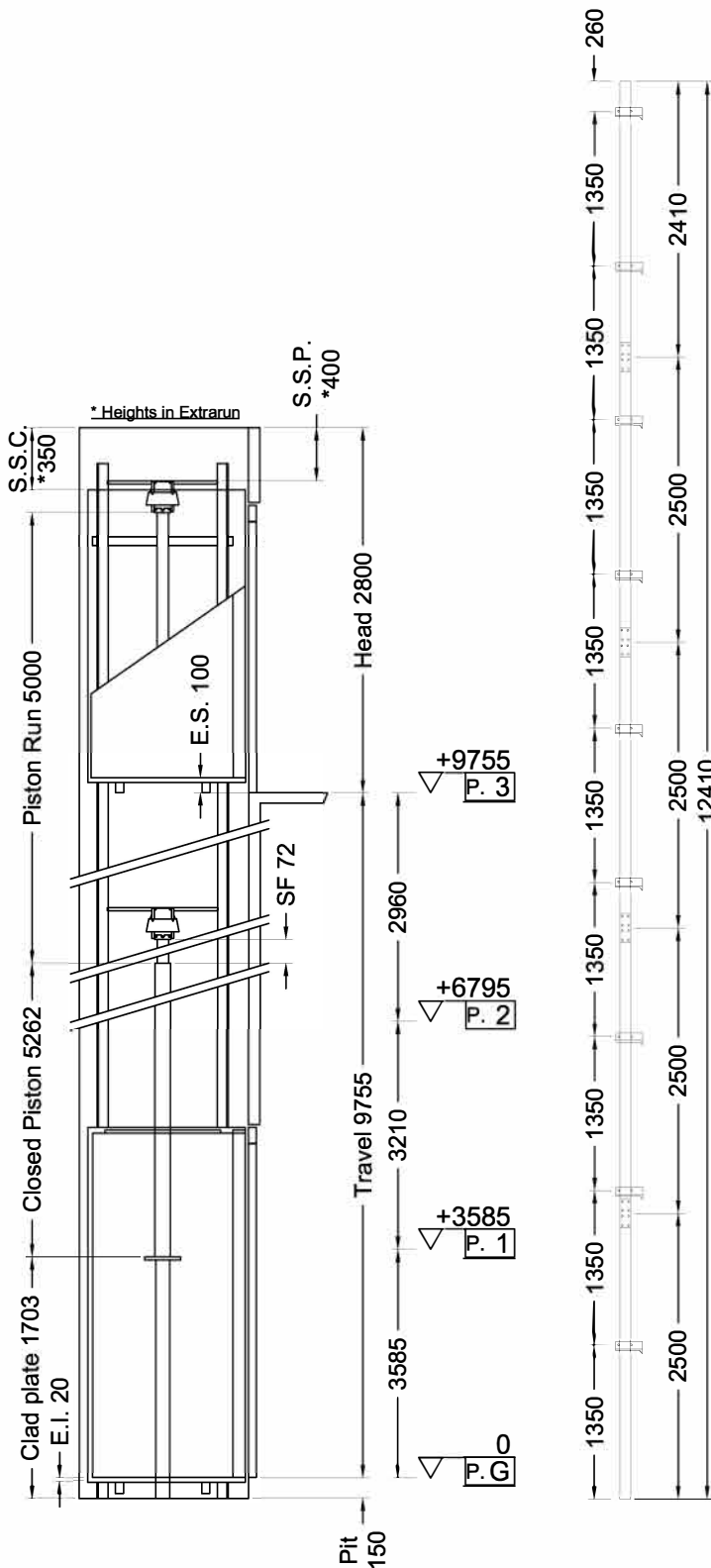
Cabina
Classica

Stops: 4 - Doors: 4

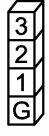
Shaft in **Reinforced concrete (C.A.)**

Customer own flooring: Dimensions **1325 (L) x 1050 (P)** thks **20 mm** Weight: **50 kg**

ORDER	VERSIONS	Description	Designer	Date	Final Drawings	
ORDER NUMBER					Model	SHEET
PS2249		Corretto Grezzo.	L. Del Bianco	24/05/2016		ELFO 2
		Varie: colori, accessori, nome vermate, distanza centralina; corsa era 9000.	D. Tomei	27/04/2016		SHEET DIMENS.
	CLIENT	Lift Shop	Final Drawings	1° STESURA		A3
	PLACE OF INSTALLATION		L. Del Bianco	24/05/16		SCALE
			CAPACITY	AREA m²	CAPACITY	1:12.5
			350 kg	1,37		



Indirect Installation		Speed 0,3 m/s	24/05/16 14.40 (V.2891) ^{EN}
THRUST DURING NORMAL OPERATION		THRUST OF SAFETY DEVICE INTERVENT.	
P	(N) 13537	P	(N) 1118
N	(N) 1182	N	(N) 9089
F1	(N) 1547	F1	(N) 2578
F2	(N) 314	F2	(N) 524
SPACES		PRESSURES	
E.I.	Extrarun below cabin (mm) 20	Max static pressure	(bar) 44,43
E.S.	Extrarun above cabin (mm) 100	Min static pressure	(bar) 26,59
SF.	Piston extraction (mm) 72	Overpressure limit	(bar) 62,2
S.S.P.	Piston/head (mm) 400	Residual pressure	(bar) 2,91
S.S.C.	Cabin/head (mm) 350		
HYDRAULIC UNIT		MECHANICAL PARTS	
Central unit	GMV HL 3010 (-*)	Guide rails	70x70x9
Capacity (l/min)	35	Brackets	(Nr) 9
Motor (V)	MF230V	Ropes	\varnothing 11 mm 6-(1+9+9)
Power (Kw)	3,4	Cables length (mm) 2 x	15000
Nominal current (A)	32	Min actual breaking load (N)	70700
Piston	Start Home (\varnothing) 70x10x5000		
Opt. oil position	BASSO		
Tubing	3/4" EN 853 1SN - FD 3/4" - GOMITO 3/4"		
Tubing length (mm)	13000		
Min hydraulic oil (L)	57		
SECURITY DEVICES	Manufacturer	Model	Certificate
Safety Gear	PFB	BP1	TÜV AFV515
Block Valve	START ELEVATOR	1/2" 0327	CA50.00525
Key Locks	FERMATOR	210/10/40	
MACHINERY LOCATION			
At floor	G	Length of the hose travel	8000 (mm)
Cables enter in shaft: Side	B		
CABIN	CABIN ACCESSORIES		
Panels	ARPA 2516 fin. Lucida VG	Mirror	No Strip Side D
Finishes	Inox BA mecc.	Handrail	Inox Lucido, Side C
Oper. panel	VERTICAL (Like finishes)		
Floor	By Customer		
Ceiling	CLOSED - Inox BA mecc. (Labirint lighting)		
Cabin Doors	Side B: 2-Panels Automatic Sliding doors, Inox BA mecc.		
OTHER ACCESSORIES			
Enabling key for the cabin button pad, double insertion			
Guides dimension 2.5 m			
Piston in 2 pcs			
Manual pump			
Manostat with overweight signal			
Two speed			
Return to the lower floor after adjustable time			
Telephone by Lift Shop			
Full height infra-red curtain V2			
ICARO display in cabin on COP			
Automatic Control 2011			
Call Accept + Emergency manual descent from cabin			
Blue Buttons - Cabin Buttons: "G, 1, 2, 3"			
Door Open Button on C.O.P.			
Cut out for flush phone 86 mm x 175 mm centred above buttons			



	ORDER	CLIENT	Final Drawings	1° STESURA
	ORDER NUMBER	PLACE OF INSTALLATION	L. Del Bianco	24/05/16
			Final Drawings	
			SCALE	SHEET
			OUT OF SCALE	2/2